

SISTEMA TESSERA[®] ACT[®] PARA MEDIR HABILIDADES SOCIO-EMOCIONALES

Sistema de evaluación no cognitiva de próxima generación, basado en la Teoría de la acción



LOS MAESTROS Y LÍDERES EDUCATIVOS CONCUERDAN:

El aprendizaje social y emocional de los alumnos (SEL) y el desarrollo de habilidades no cognitivas y fortalezas de las personas es de importancia crítica para el éxito en la escuela y en la vida.

Muchos estudios encuentran que estos atributos contribuyen tanto o más que las habilidades académicas para el logro académico, el éxito profesional-Laboral y el bienestar de por vida.

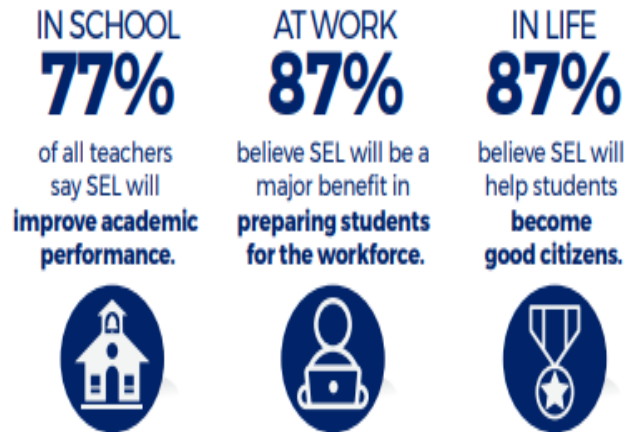
WHY IT IS
IMPERATIVE ▶
TO ASSESS

SOCIAL AND EMOTIONAL LEARNING (SEL) SKILLS

ACT Tesseract[®]

Next Generation Social and Emotional Learning Assessment System

EDUCATORS BELIEVE
greater emphasis on SEL learning
 would have **major benefits!**



Teachers believe programs in **SEL ARE ESSENTIAL**⁵

▶ **Only 2%** of teachers think we teach **too much SEL.**



CURIOSIDAD

- Creativo
- Innovador
- Acepta diferentes puntos de vista

RESILENCIA

- Flexible
- Lisa con la crítica
- Soporta el estrés

TRABAJO EN EQUIPO

- Sensible a los demás
- Servicial
- Cooperativo

LIDERAZGO

- Se hace cargo
- Se expresa fácilmente
- Persuasivo

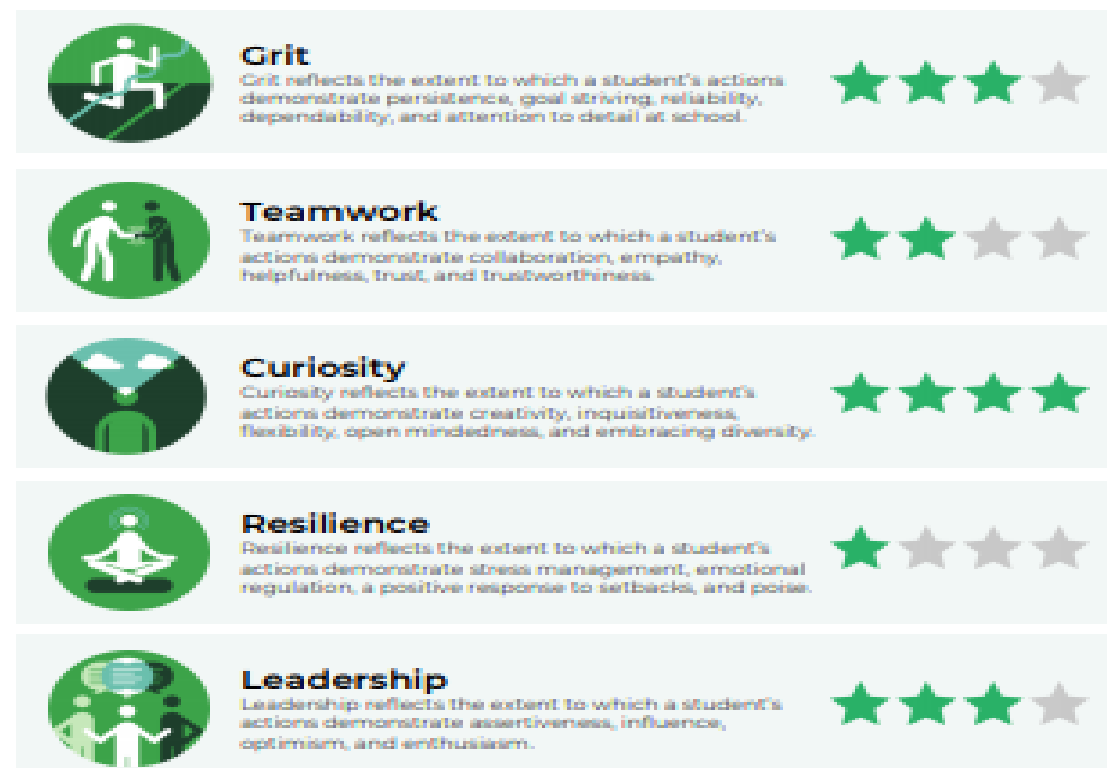
TENACIDAD

- Orientado a objetivos
- Supera expectativas
- Persigue desafíos
- Persistente

Scores for Isabella Hawkins September 1, 2018

ACT Tessera measures five important social and emotional skills, described below. Stars indicate your current level on each skill. Don't worry too much if you get one star on any of the skills. You can always improve with practice.

For detailed information on improving the five Tessera skills, and for explanation of how star scores are related to percentiles, go to www.act.org/tesserareport.



★ At or below the 80th percentile. Approximately 80% of the nationally tested sample scored higher than students in this range.
 ★★ Between the 70th and 80th percentiles (inclusive). Approximately 80% scored lower and 20% scored higher than students in this range.
 ★★★ Between the 50th and 70th percentiles (inclusive). Approximately 50% scored lower and 50% scored higher than students in this range.
 ★★★★ At or above the 20th percentile. Approximately 80% scored lower than students in this range.